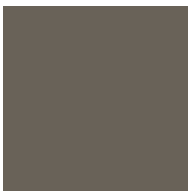
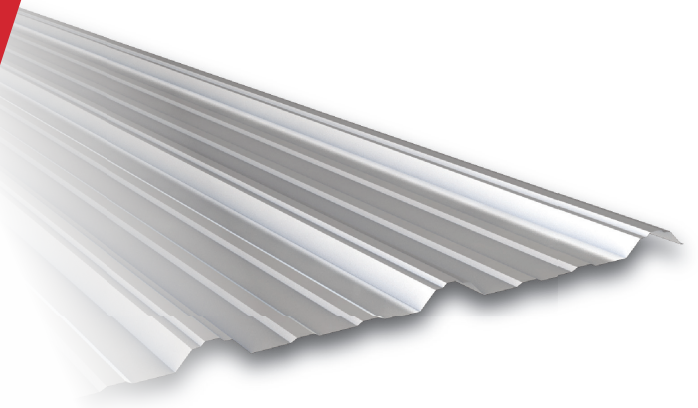


CS/AP PANELS

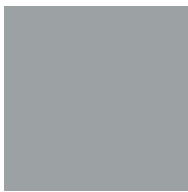
Ultra-Kote Premium (PVDF)

Superior materials make the difference...

Premium finishes and design give CHIEF's Standard Panels (CS) and CHIEF's Architectural Panels (AP) the edge when it comes to quality steel roof and wall panels. They're ideal for a variety of other applications as well. Interior liners, fascias, canopies, and soffits are just some of the many uses for this versatile panel. With a 1 1/8" deep corrugation for added strength, 36" panel widths for quicker erection and availability in many different colors, CHIEF's CS and AP ribbed panels are the perfect choice for your construction project.



Antique Bronze (AQ)



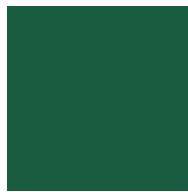
Ash Gray (AG)



Charcoal Gray (CG)



Cherokee (CK)



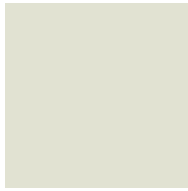
Emerald Green (EG)



Fieldstone (FS)



Parchment (PA)



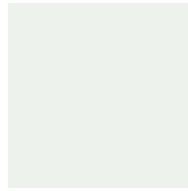
Polar White (PW)



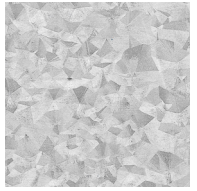
Royale Blue (RB)



Sierra Madre (SM)



White Polyester (WP)



Galvalume (GM)

*All colors 26 & 24 ga. except White Polyester (29 ga.)

**CHIEF maintains stock inventory of polar white and Galvalume. All other colors shown are available as CHIEF standard colors and may not be in stock.

*** CHIEF's White Polyester is an economical finish intended for interior applications only and is a non-warranty product.

Ultra-Kote Premium (UKP) Finish

CHIEF's Ultra-Kote Premium finish is made with polyvinylidene fluoride resin, where a minimum of 70% of the resin is PVDF (Kynar 500® or Hylar 5000®). This unique chemistry is combined with acrylic resin, as well as ceramic and select inorganic pigmentation. The result is Ultra-Kote Premium's proven ability to resist ultraviolet radiation in sunlight for maximum protection against general weathering effects, chalking and fading.

Since all color chips are affected by age, lighting conditions, heat and mechanical coating processes, the chips on this page may vary slightly in color or finish from the actual product. Oil canning in the flat areas of panels is inherent of coil steel products and shall not be a cause for product refusal. CHIEF reserves the right to change designs, prices and specifications at any time without notice.

Acrylic Coated Galvalume® (GM)

CHIEF's exterior roof, wall and trim material is available in an industry standard ASTM A792 Acrylic Coated Galvalume® finish. Galvalume® is a unique coating of 55% aluminum and 45% zinc that resists corrosion. The Galvalume® sheet is coated with a thin, clear acrylic coating applied to both sides.

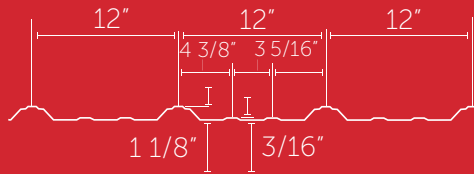


CHIEF's Finish Warranties:

Ultra-Kote Premium Roof Panel Finish Limited Warranty - 35 year | Ultra-Kote Premium Wall Panel Finish Limited Warranty - 35 year | Galvalume® Panel Limited Warranty - 25 year



1821 S. North Road / PO Box 2078 / Grand Island, NE 68802-2078 / (308) 389-7281 / www.chiefbuildings.com



Note: Dimensions are nominal.

Ribbed Roof Panel

- Rollformed profile shall be CS (CHIEF Standard) configuration as manufactured by CHIEF Buildings. Panels shall have 1 1/8" deep major ribs spaced at 12" on center, with minor ribs between major ribs. Each panel shall provide a net coverage width of 36".
- Panels shall be manufactured from 26 gauge or 24 gauge, 80,000 PSI material.
- Provide roof panel assemblies with permanent resistance to air leakage through assembly of not more than 0.005 cfm/sf of fixed roof area when tested according to ASTM E1680 at a static pressure differential of 6.24 psf.
- Provide roof panel assemblies with no water penetration as defined in the test method when tested according to ASTM E1646 at a static pressure differential of 12.0 psf.
- Provide roof panel assemblies with UL Class 30, 60, or 90 uplift rating in accordance with UL 580 "Tests for Uplift Resistance of Roof Assemblies".
- Provide roof panel assemblies with UL Class A Fire Rating in accordance with UL 790 "Test Methods for Fire Tests of Roof Coverings".
- Provide roof panel assemblies with UL Class 4 Impact Rating in accordance with UL 2218 "Impact Resistance of Prepared Roof Covering Material".
- Panels shall be one piece for slope lengths less than 39'-6". Endlaps, if required, shall be 8" and occur at a purlin.
- Panel finish shall be acrylic coated Galvalume® AZ55 coating in accordance with ASTM A792.

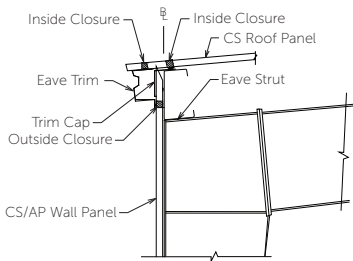
OR

Substrate shall be Galvalume® AZ50 coating in accordance with ASTM A792. Sheets shall be coated with a fluoropolymer topcoat containing not less than 70% polyvinylidene fluoride (PVDF) over primer with total DFT of 0.8-1.0. The reverse side shall be coated with pigmented polyester. Exterior color to be selected from CHIEF standard color choices.

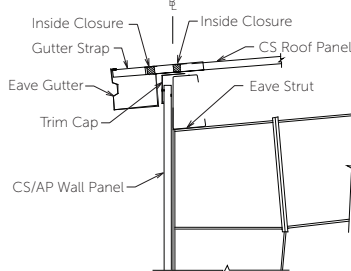
Exterior Wall Panel

- Rollformed profile shall be CS (CHIEF Standard) or AP (Architectural Panel) configuration as manufactured by CHIEF Buildings. Panels shall have 1 1/8" deep major ribs spaced at 12" on center, with minor ribs between major ribs. Each panel shall provide a net coverage width of 36".
- Manufactured from 26 gauge or 24 gauge, 50,000 PSI or 80,000 PSI material.
- Provide wall panel assemblies (when installed with mastic in the walls) with permanent resistance to air leakage through assembly of not more than 0.006 cfm/sf of fixed wall area when tested according to ASTM E283 at a static pressure differential of 6.24 psf.
- Provide wall panel assemblies (when installed with mastic in the walls) with no water penetration as defined in the test method when tested according to ASTM E331 at a static pressure differential of 12.0 psf.
- Substrate shall be Galvalume® AZ50 coating in accordance with ASTM A792.
- Sheets shall be coated with a fluoropolymer topcoat containing not less than 70% polyvinylidene fluoride (PVDF) over primer with total DFT of 0.8-1.0. The reverse side shall be coated with pigmented polyester. Exterior color to be selected from Chief standard color choices.

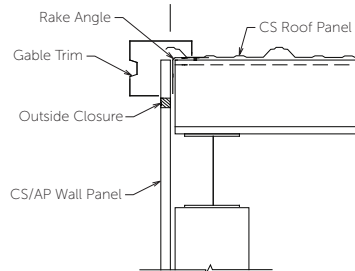
Eave Trim



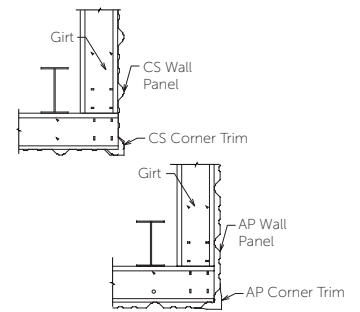
Eave Gutter



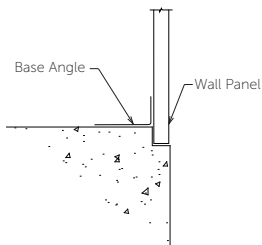
Gable Trim



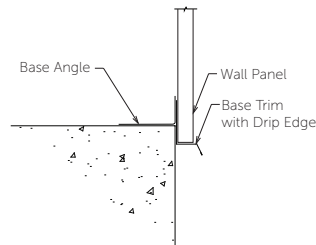
Outside Corner



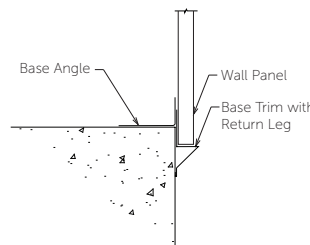
Notch in Concrete



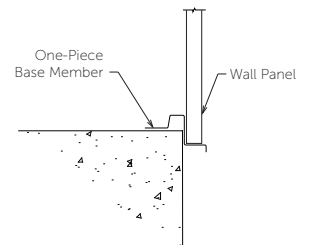
Base Trim with Drip Edge



Base Trim with Return Leg



One Piece Base Member



Galvalume® is a registered trademark of BIEC International, Inc. | Kynar 500® is a registered trademark of Arkema, Inc. | Hylar 5000® is a registered trademark of Solvay Solexis, Inc.



1821 S. North Road / PO Box 2078 / Grand Island, NE 68802-2078 / (308) 389-7281 / www.chiefbuildings.com